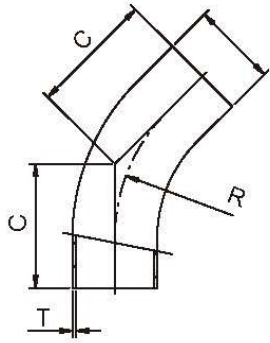
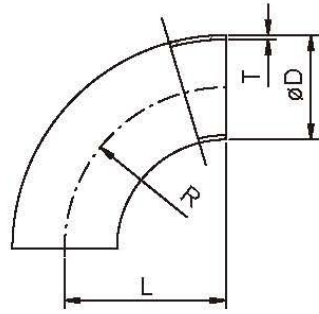


## 45° Long Elbow



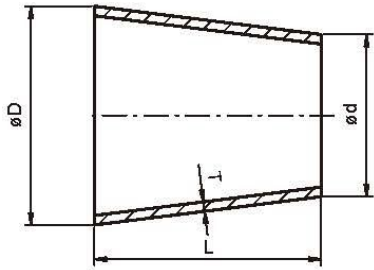
SIZE	D	C	R	T
DN25	28	20	20	1.5
DN32	34	23	23	1.5
DN40	40	20	20	1.5
DN50	52	27	27	1.5
DN65	70	30	30	2.0
DN80	85	33	33	2.0
DN100	104	40	40	2.0

## 90° Short Elbow

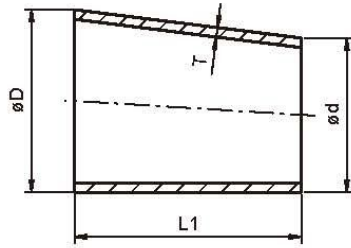


SIZE	D	L1	R	T
DN25	28	50	50	1.5
DN32	34	55	55	1.5
DN40	40	60	60	1.5
DN50	52	70	70	1.5
DN65	70	80	80	2.0
DN80	85	90	90	2.0
DN100	101.6	133	133	2.0
DN100	104	100	100	2.0

## Concentric Reducer

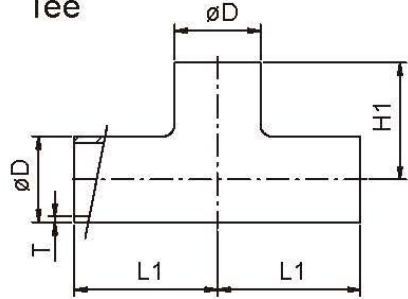


## Eccentric Reducer

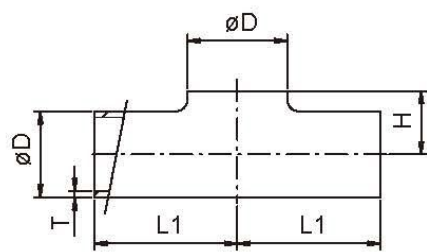


SIZE	øD	ød	T	L	L1
32 x 25	32	26	1.5	11	16.5
40 x 25	38	26	1.5	22	33
40 x 32	38	32	1.5	11	16.5
50 x 25	50	26	1.5	44	66
50 x 32	50	32	1.5	33	49.5
50 x 40	50	38	1.5	22	33
65 x 40	66	38	2.0	51	77
65 x 50	66	50	2.0	29	44
80 x 50	81	50	2.0	56	85
80 x 65	81	66	2.0	27	41.2
100 x 50	100	50	2.0	90	137.5
100 x 65	100	66	2.0	61	93.5
100 x 80	100	81	2.0	34	52.5

## Tee

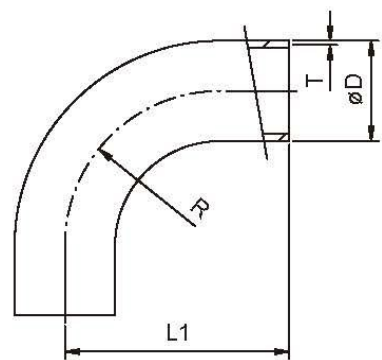


## Pull Tee



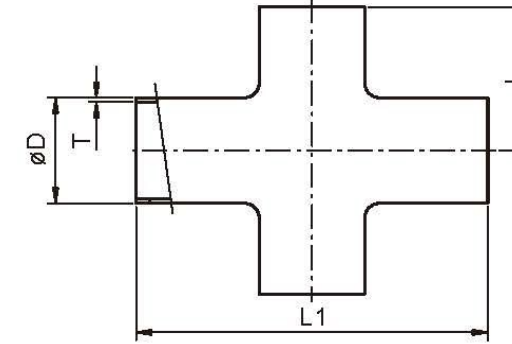
SIZE	øD	H	H1	L1	T
DN20	22	13	47	47	1.5
DN25	28	15.5	50	50	1.5
DN32	34	19	55	55	1.5
DN40	40	22	60	60	1.5
DN50	52	28.5	70	70	1.5
DN65	70	39.5	80	80	2.0
DN80	85	46.5	90	90	2.0
DN100	101.6	56	150	150	2.0
DN100	104	58	100	100	2.0

## 90° Long Bend



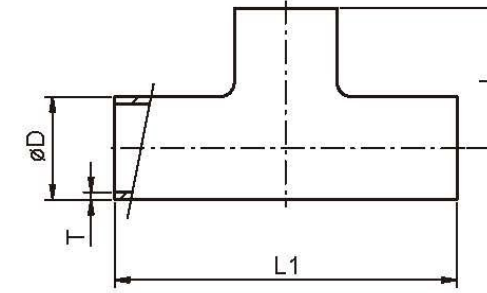
SIZE	D	L1	R	T
DN25	28	65	50	1.5
DN32	34	73	55	1.5
DN40	40	80	60	1.5
DN50	52	92	70	1.5
DN65	70	105	80	2.0
DN80	85	119	90	2.0
DN100	101.6	175	133	2.0
DN100	104	140	100	2.0

## Cross Short Cross



SIZE	D	L	L1	T
1.0"	25.4	65	130	1.65
1.5"	38.1	85	170	1.65
2.0"	50.8	110	220	1.65
2.5"	63.5	135	270	1.65
3.0"	76.2	155	310	1.65
4.0"	101.6	195	390	2.10

## Welding Tee



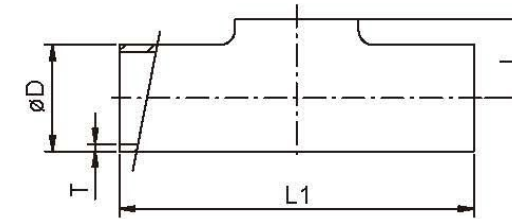
### Welding Tee

SIZE	D	L	L1	T
1.0"	25.4	43.5	87	1.65
1.5"	38.1	63.5	127	1.65
2.0"	50.8	88.5	177	1.65
2.5"	63.5	113.5	227	1.65
3.0"	76.2	133.5	267	1.65
4.0"	101.6	173.5	347	2.10

### Long Tee

SIZE	D	L	L1	T
1.0"	25.4	65	130	1.65
1.5"	38.1	85	170	1.65
2.0"	50.8	110	220	1.65
2.5"	63.5	135	270	1.65
3.0"	76.2	155	310	1.65
4.0"	101.6	195	390	2.10

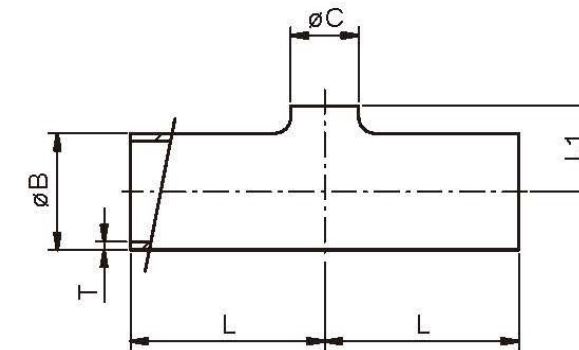
## Pull Tee



SIZE	D	L	L1	T
1.0"	25.4	14.2	87	1.65
1.5"	38.1	21.6	127	1.65
2.0"	50.8	29.1	177	1.65
2.5"	63.5	35.3	227	1.65
3.0"	76.2	41.4	267	1.65
4.0"	101.6	54.7	347	2.10

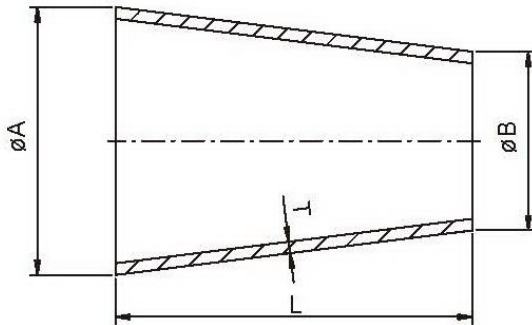
## Reducing Tee

### Reducing Tee W/O Straight end



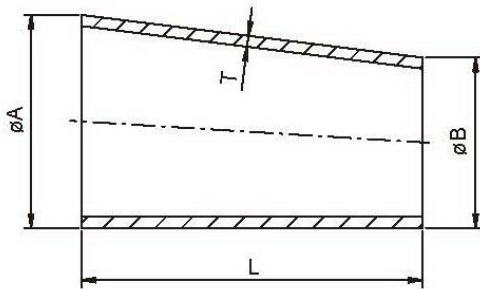
SIZE	B	C	L	L1	T
1.5" x 1.0"	38.1	25.4	63.5	22	1.65
2.0" x 1.0"	50.8	25.4	88.5	29	1.65
2.0" x 1.5"	50.8	38.1	88.5	29	1.65
2.5" x 1.0"	63.5	25.4	113.5	35	1.65
2.5" x 1.5"	63.5	38.1	113.5	35	1.65
2.5" x 2.0"	63.5	50.8	113.5	35	1.65
3.0" x 1.0"	76.2	25.4	132	41	1.65
3.0" x 1.5"	76.2	38.1	129	41	1.65
3.0" x 2.0"	76.2	50.8	112	41	1.65
3.0" x 2.5"	76.2	63.5	112	41	1.65
4.0" x 2.0"	101.6	50.8	173.5	55	2.10
4.0" x 2.5"	101.6	63.5	173.5	55	2.10
4.0" x 3.0"	101.6	76.2	173.5	55	2.10

## Concentric Reducer

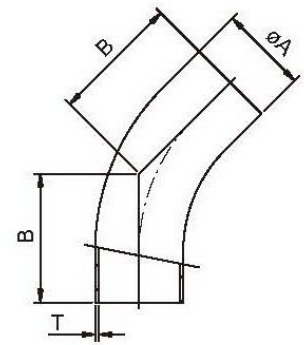


SIZE	A	B	L	T
1.5" × 1.0"	38.1	25.4	29	1.65
2.0" × 1.0"	50.8	25.4	53	1.65
2.0" × 1.5"	50.8	38.1	41	1.65
2.5" × 1.0"	63.5	25.4	82	1.65
2.5" × 1.5"	63.5	38.1	64	1.65
2.5" × 2.0"	63.5	50.8	40	1.65
3.0" × 1.0"	76.2	25.4	110	1.65
3.0" × 1.5"	76.2	38.1	81	1.65
3.0" × 2.0"	76.2	50.8	55	1.65
3.0" × 2.5"	76.2	63.5	41	1.65
4.0" × 1.5"	101.6	38.1	135	2.10
4.0" × 2.0"	101.6	50.8	106	2.10
4.0" × 2.5"	101.6	63.5	76	2.10
4.0" × 3.0"	101.6	76.2	53	2.10

## Eccentric Reducer



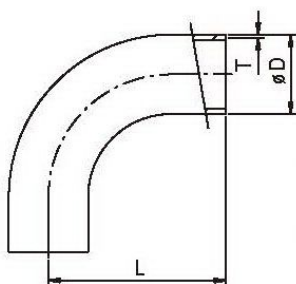
SIZE	A	B	L	T
1.5" × 1.0"	38.1	25.4	35	1.65
2.0" × 1.0"	50.8	25.4	54	1.65
2.0" × 1.5"	50.8	38.1	36	1.65
2.5" × 1.0"	63.5	25.4	76	1.65
2.5" × 1.5"	63.5	38.1	66	1.65
2.5" × 2.0"	63.5	50.8	35	1.65
3.0" × 1.0"	76.2	25.4	112	1.65
3.0" × 1.5"	76.2	38.1	78	1.65
3.0" × 2.0"	76.2	50.8	66	1.65
3.0" × 2.5"	76.2	63.5	44	1.65
4.0" × 1.5"	101.6	38.1	122	2.10
4.0" × 2.0"	101.6	50.8	97	2.10
4.0" × 2.5"	101.6	63.5	73	2.10
4.0" × 3.0"	101.6	76.2	77	2.10



## 45° Long Elbow

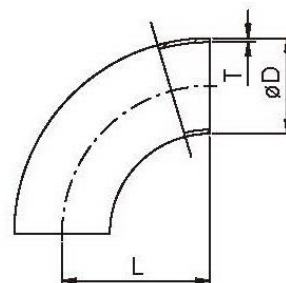
SIZE	A	B	T
1.0"	25.4	30.2	1.65
1.5"	38.1	41.3	1.65
2.0"	50.8	58.7	1.65
2.5"	63.5	76.2	1.65
3.0"	76.2	93.7	1.65
4.0"	101.6	122.2	2.10

## 90° Long Tube Bend



SIZE	D	L	T
1.0"	25.4	65	1.65
1.5"	38.1	85	1.65
2.0"	50.8	110	1.65
2.5"	63.5	135	1.65
3.0"	76.2	155	1.65
4.0"	101.6	195	2.10

## 90° Short Tube Bend



SIZE	D	L	T
1.0"	25.4	43.5	1.65
1.5"	38.1	63.5	1.65
2.0"	50.8	88.5	1.65
2.5"	63.5	113.5	1.65
3.0"	76.2	133.5	1.65
4.0"	101.6	173.5	2.10